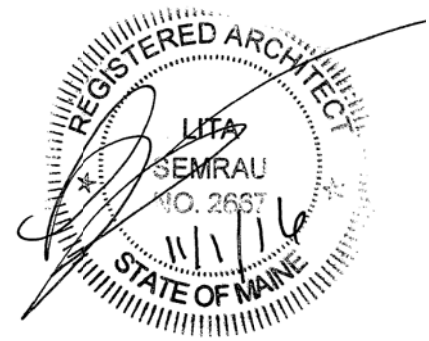


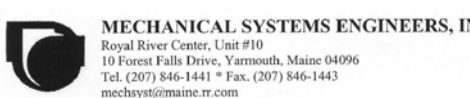


PORT CITY ARCHITECTURE

65 NEWBURY STREET
PORTLAND, ME 04101
207.761.9000



Consultants:



**PERMIT SET
11-1-16**

**NOT FOR
CONSTRUCTION**

**NEWPORT
DEVELOPMENT
ASSOCIATES**

164 Middle St
Portland, Maine

#	DATE	DESCRIPTION

Date Issued November 1, 2016

Project Number 16201

Drawing Scale AS NOTED

DEMO EXTERIOR ELEVATIONS

Drawn By

JFP CM

TS CR

Checked By

LAS

D2.5

GENERAL DEMO/ RESTORATION NOTES:

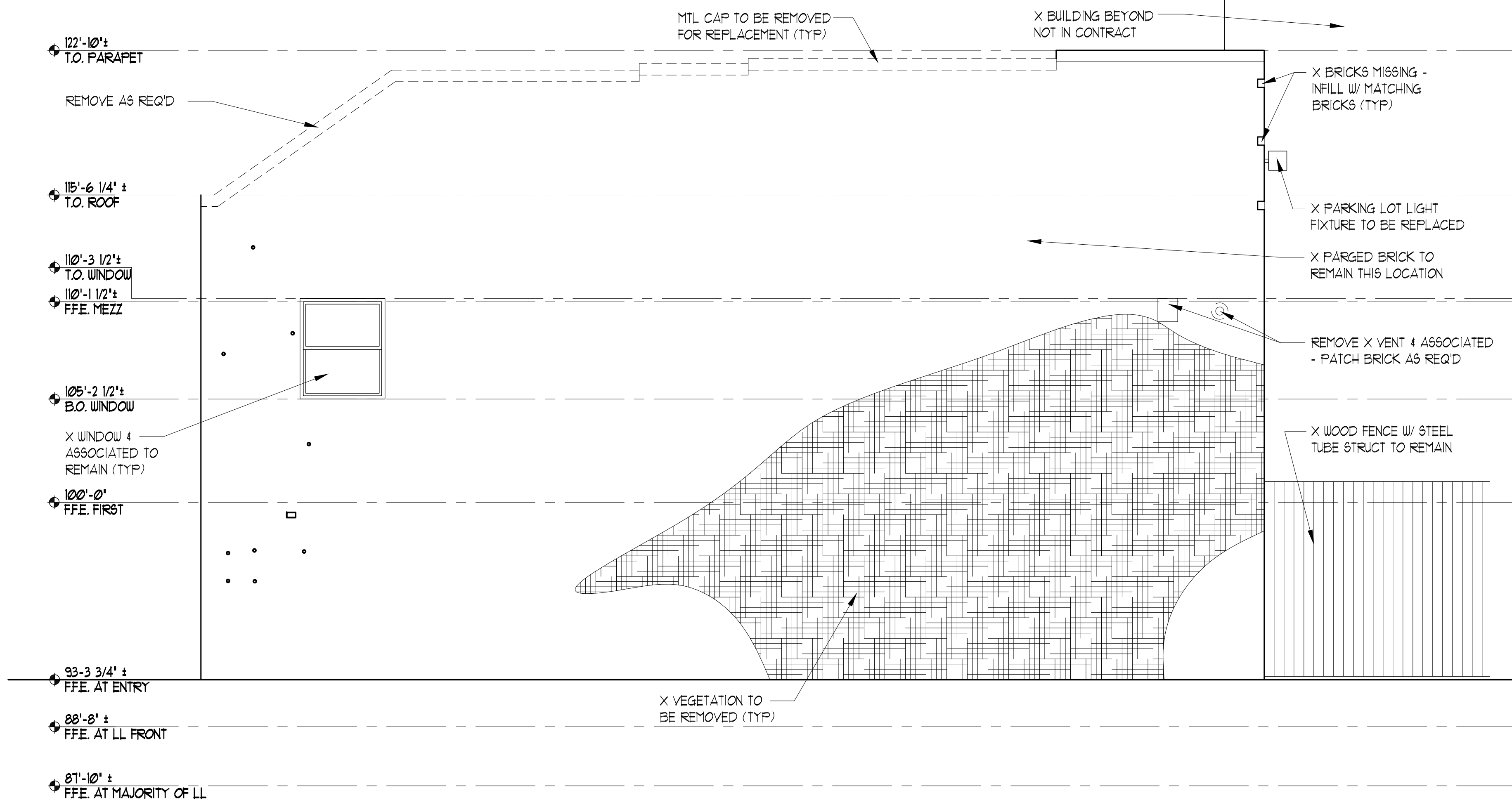
- CLEAN AND PREP ALL LINTELS FOR PAINT
- CONTRACTOR TO VERIFY & REMOVE BY GRINDING OUT ANY MTL ELEMENTS EMBEDDED IN BRICK USED ON ITEMS THAT ARE BEING REMOVED & REPOINTED AS REQ'D
- REMOVE ALL EXISTING CAULK. OPEN JOINTS UP TO 1/8" WIDE SHALL BE RECAULKED. JOINTS LARGER THAN 1/8" WIDE TO RECEIVE EPOXY SECTION REPAIR

RESTORATION KEY

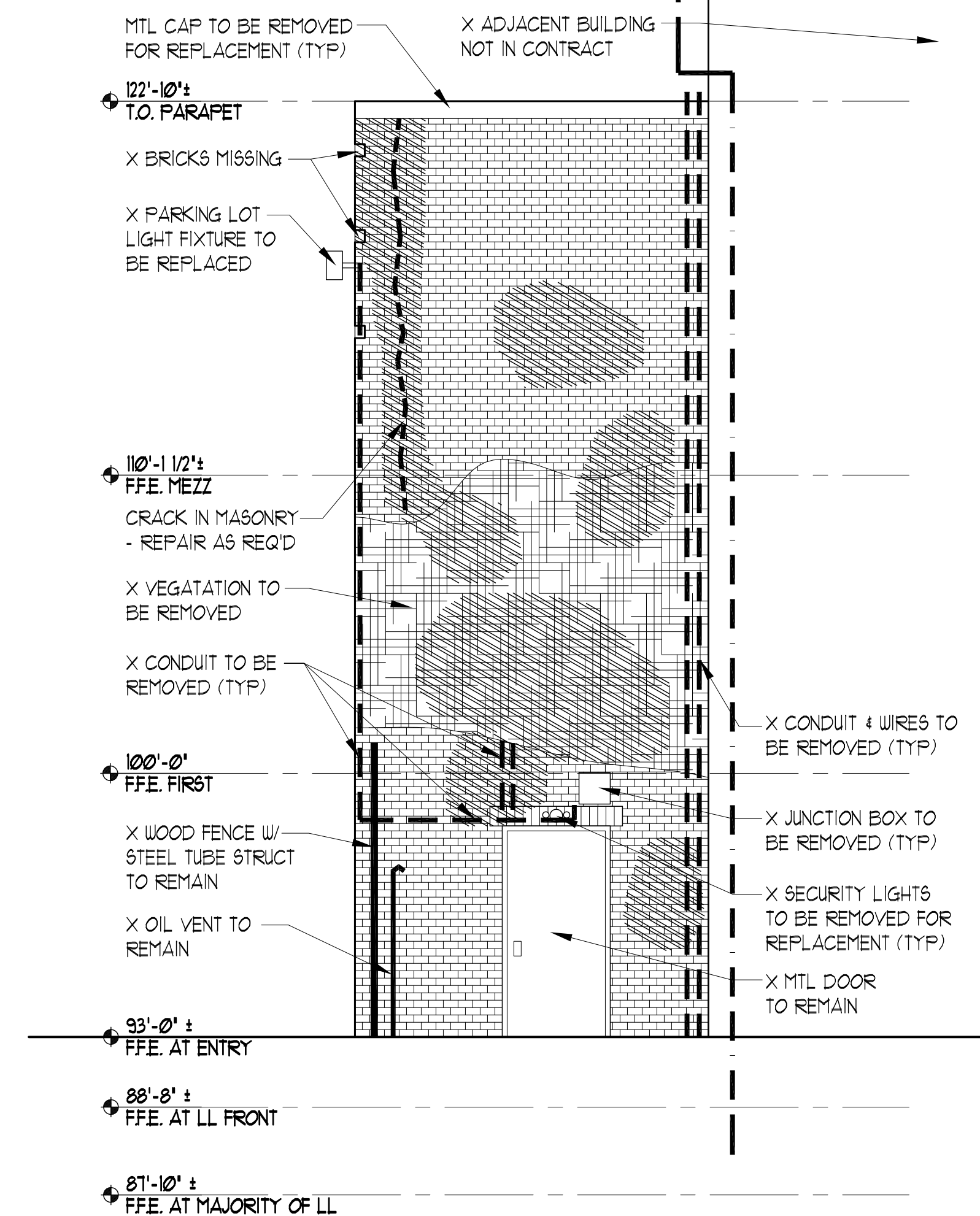
- MORTAR SOFT OR MISSING
ACTION: CUT BACK 3/4" - (3) LIFTS 1/4" EACH (85%)
15% DEEP REPOINT W/ FINAL 3/4", (3) LIFTS
- SEE NOTE ABOVE - BACK SIDE OF SECOND STORY BRICK PARAPET

- ABANDONED METAL ELEMENTS TO BE GROUND OUT + REPOINTED AS REQ'D

- STITCH BRICK TOGETHER
-SEE STRUCTURAL



2 REAR EXTERIOR ELEVATION
SCALE: 1/4" = 1'-0"



1 SIDE EXTERIOR ELEVATION
SCALE: 1/4" = 1'-0"